

LAS VEGAS, NEVADA

AL-6970 (FAA)

# GPS RWY 12R

NORTH LAS VEGAS (VGT)

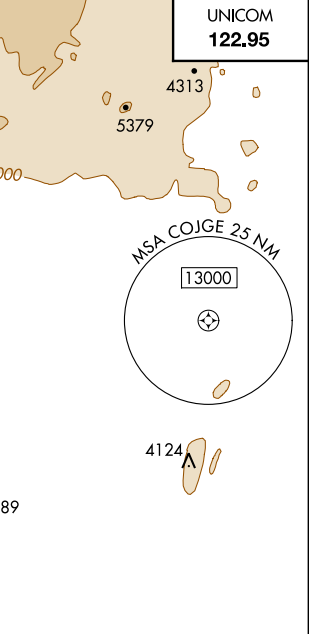
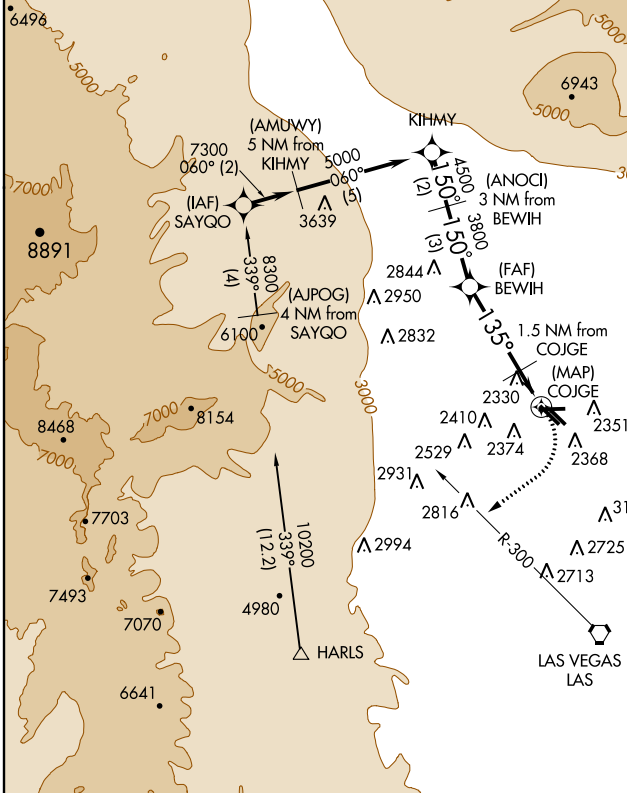
APP CRS	Rwy Idg	<b>5001</b>
<b>135°</b>	TDZE	<b>2205</b>
	Apt Elev	<b>2205</b>

**NA** When local altimeter setting not received, use McCarran Intl altimeter setting and increase all MDA 40 feet and S-12R Cat D visibility ¼ mile. Circling to Rwy 12L-30R NA.

**MISSED APPROACH:** Climbing right turn to 4000 via heading 220° and LAS R-300 to LAS VORTAC.

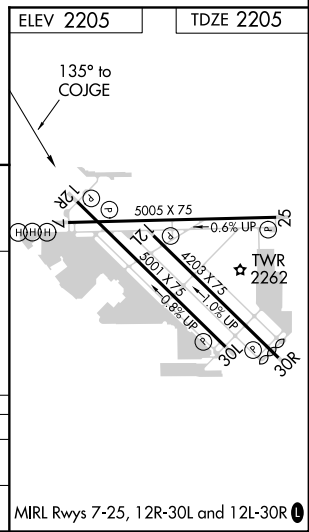
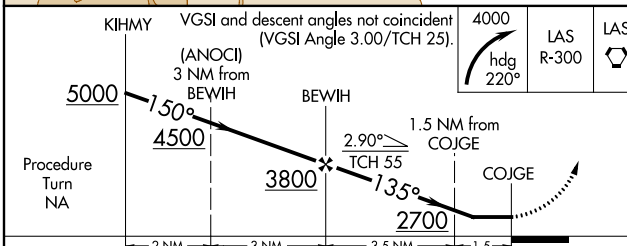
ATIS <b>118.05</b>	LAS VEGAS APP CON Rwy 30 <b>119.4 282.2</b>	NELLIS APP CON Rwy 12 <b>118.125 291.725</b>	NORTH LAS VEGAS TOWER* <b>125.7 (CTAF) 360.75</b>	GND CON <b>121.7</b>	CLNC DEL <b>124.0</b>
-----------------------	---	--	--	-------------------------	--------------------------

UNICOM  
**122.95**



SW-4, 09 JAN 2014 to 06 FEB 2014

SW-4, 09 JAN 2014 to 06 FEB 2014



CATEGORY	A	B	C	D
S-12R	2620-1	415 (500-1)	2620-1¼	415 (500-1¼)
CIRCLING	2680-1	475 (500-1)	2680-1½	2760-2 555 (600-2)

MIRL Rwy 7-25, 12R-30L and 12L-30R

LAS VEGAS, NEVADA  
Orig-D 13346

36°13'N-115°12'W

# NORTH LAS VEGAS (VGT)

## GPS RWY 12R